



Eliminate Non Value-Added Activities

Lean Flow Mapping [Base]

See, Understand, Optimize Material & Information Flows

Eliminate waste to improve Customers Satisfaction

*"Whenever there is a product, or service, for a Customer there is a Value Stream...
... The challenge lies in Seeing It"*

Developed by Toyota and popularized by The Lean Enterprise Institute, the Value Stream Mapping (VSM) is a fundamental tool to see and understand the whole of materials and information flows with for objective identifying the non value-added activities, and eliminating them.

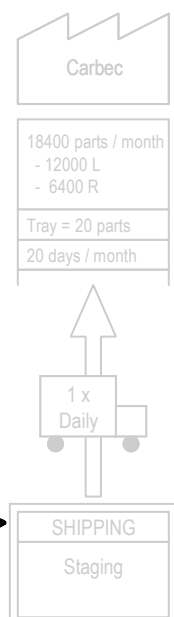
Above all, Value Stream Mapping is a pragmatic methodology to represent and analyze flows. It gives the advisability of sharing a global vision of the improvements to be brought so that an organization becomes more powerful and reactive against the increasing of Customers' requirements.

The benefit of this fundamental tool lies in its simplicity of implementation to improve the global performance of an organization in term of safety, lead time, quality and cost savings. The Lean Flow Mapping approach differs from traditional process improvement methods because it includes both the materials and information flows on a Mixed-Model environment.

- This training program offers the opportunity to understand to "See the Flow" of materials and information throughout the value stream. Participants will work on a specific case study, where they learn to map the current and future state materials and information flows.
- They will also learn to develop an implementation plan that will help successfully carry out the changes necessary to take a client from the current state map to the future state.
- At the end of this training, participants will :
 - Learn to "See the Flow" of materials and information,
 - Draw a Current State Value Stream map,
 - Optimize materials and information flows using Lean concepts,
 - Create and implement a plan to achieve the Future State Value Stream vision,
 - Transfer "Lean Flow Mapping" techniques to the continuous improvement internal teams.

Knowledge that we have of the complex flows makes it possible us to give you the adapted solutions, in a Mixed-Model production environment, and to provide the essential tools to you which you could need to approach your specific problems related to :

- Customers demand fluctuations,
- times variations resulting of a Mixed-Model production,
- shared processes and resources management.



► Web : www.leanflowconsulting.com ► Email : contact@leanflowconsulting.com ► Phone : +33 (0) 676 730 692

Copyright © 2004-2011– Lean Flow Consulting SARL – All Rights Reserved

Release 1.03 US



Attendees

- Production and supply chain managers, supervisors.
- Manufacturing and technical support engineers, technicians.
- Continuous improvement managers, leaders and change agents.
- Value Stream managers involved in continuous improvement projects.

Learning Objectives

- Develop the ability to "See" and understand wall-to-wall Value Stream.
- Optimize materials flows.
- Clarify and standardize information flows.
- Reduce flow process lead times.
- Reduce raw materials, work in process and finished goods inventories.
- Eliminate waiting times between :
 - Manufacturing processes,
 - Support departments (Procurement, logistic, ...).
- Design and implement a continuous lean flow production.
- Understand the benefits of the Mixed-Model approach to build different products on a same main production line.
- Manage a mixed-model organization-based on Customers demand.
- Develop continuous improvement plans.
- Understand and translate Customers expectations to performance metrics.

Training Methods

- Using a manufacturing case study, this training program provides a comprehensive understanding of the Lean Manufacturing concepts and fundamentals. Key points such as materials and information flows (from suppliers to Customers), sources of waste identification, Value Stream improvement and pull systems replenishment are developed, discussed and demonstrated to conduct an effective Lean transformation.
- Our teaching approach is founded on the concept to "Train the Trainers" rather than to transmit only a technical know-how. Handbook including all training modules, case study, exercises, tools used and value stream icons guide is delivered to each participant.

Public Training : 2-day Workshop – 1120 € + VAT per person

For On-Site Training, please contact us at : contact@leanflowconsulting.com

Optional Implementation Services

An optional 2 or 3-day service is offered in addition with this workshop to assist the participants in the completion of an on-site event.





Program Content

Module 1 : LFM101US – Value Stream Mapping

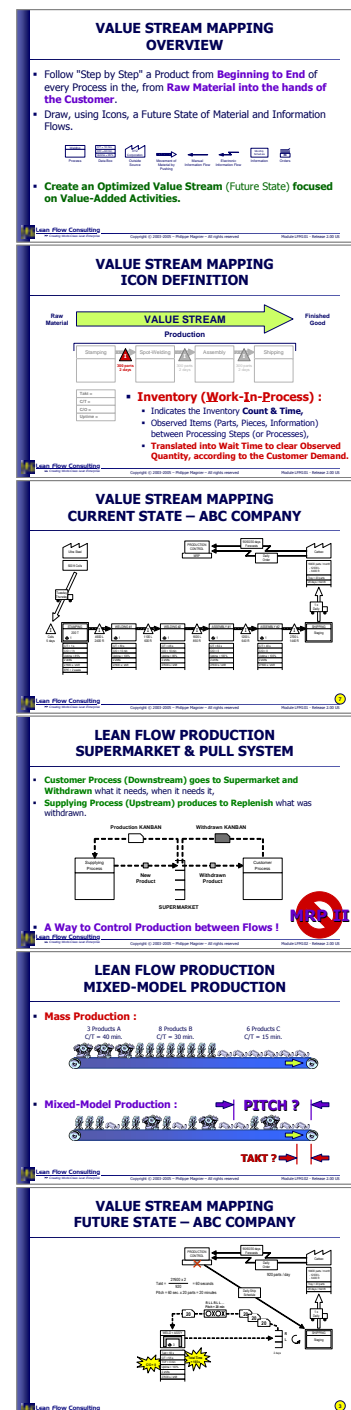
- Lean Manufacturing principles,
- Process, materials & information flows, Value Stream,
- Value Stream Manager responsibilities,
- Value Stream Mapping – Current state :
 - Drawing a value stream map,
 - Batch production, inventory & work in process,
 - Flow Process Lead Time (FPLT) vs. Total Product Cycle Time (TPC/t).

Module 2 : LFM102US – Lean Flow Production

- Identification & Elimination of waste,
- Over-production : Causes et effects,
- Lean Value Stream :
 - Takt-Time,
 - Continuous & One-piece flow production,
 - Pull systems & Kanban.
- Powerful of a Mixed-Model production line :
 - Mixed-Model production principles,
 - Actual time weighted calculation.

Module 3 : LFM103US – Optimization and Implementation

- Key questions to optimize Current Value Stream,
- Value Stream Mapping – Future state :
 - Drawing an ideal value stream map,
 - Takt-Time definition,
 - Balance & flow,
 - Production flow pulled by Customers demands,
 - Pacemaker process,
 - Production sequencing,
 - Flow Process Lead Time (FPLT) vs. Total Product Cycle Time (TPC/t).
- Step by step implementation :
 - Basic implementation plan,
 - Value Stream review.





Lean Flow Consulting

Consulting & Assistance

Lean Flow Consulting assists steering committee and top-management to define improvement strategies shared with all key people involved in your process of transformation.

Lean Flow Consulting supports and leads members and dedicated teams throughout, and for each step of your Continuous Improvement, Lean Manufacturing, Lean Office and Lean Enterprise initiatives :

- Definition of assessment and improvement plan,
- Identification of training courses requirements,
- Specifics training sessions for implementation teams,
- Assistance to simplify, redesign and optimize material flows,
- Support to implement visual management tools,
- Follow-up until the appropriation of methodology by the Customer.

Lean Flow Consulting also assists manufacturing companies for punctual or specific events such as :

- Value stream management in the offices (Lean Office),
- Supply chains optimization,
- Mixed-Model Value Stream Mapping,
- Implementation of material replenishment with Kanban,
- Statistical Process Control (SPC),
- 7-Steps Problems solving methodology.

Skills & Knowledge

Master Demand Flow® Technology.

Black-Belt 6 Sigma.

Lean Manufacturing & Lean Office.

15 years of flow manufacturing experience in worldwide companies :

- HVAC/R Products & Equipment,
- Aerospace, Electronic,
- Automotive, ...

Employees & project team members training :

- Demand Flow® Technology,
- 6 Sigma & Statistical Process Control,
- Continuous Improvement,
- Value Stream Mapping,
- Lean Manufacturing, Lean Flow Technology & Lean Office,

Demand Flow® Technology Training Centers implementation,

Mixed-Model lines, cells & fabrication feeders design & implementations,

Production facilities rearrangement in France & Europe,

6 Sigma Black-Belt projects leader.

Other Education Programs :

Lean Flow Technology,

Lean Flow in the Office,

Statistical Process Control (SPC),

7-Steps to Improve Processes,

FMEA, 5S, ...

Information – Registration :

- Tel : +33 (0) 676 730 692
- Fax : +33(0) 248 505 667
- Email : contact@leanflowconsulting.com

